

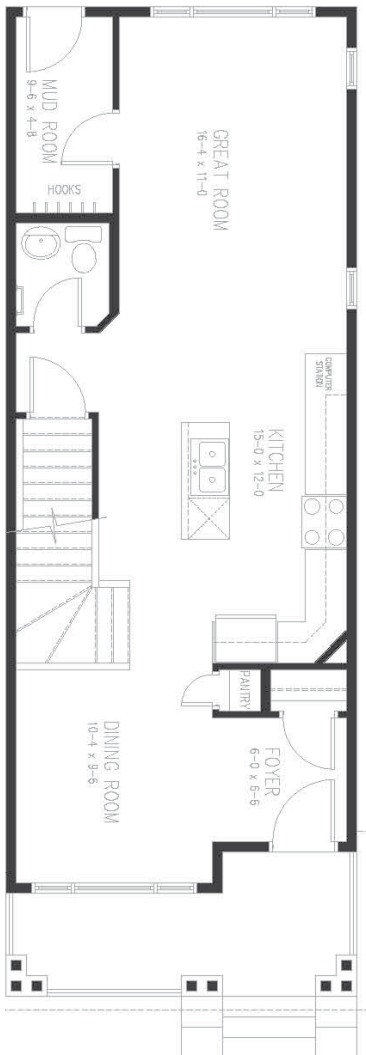


CityLife
homes
by Birchwood

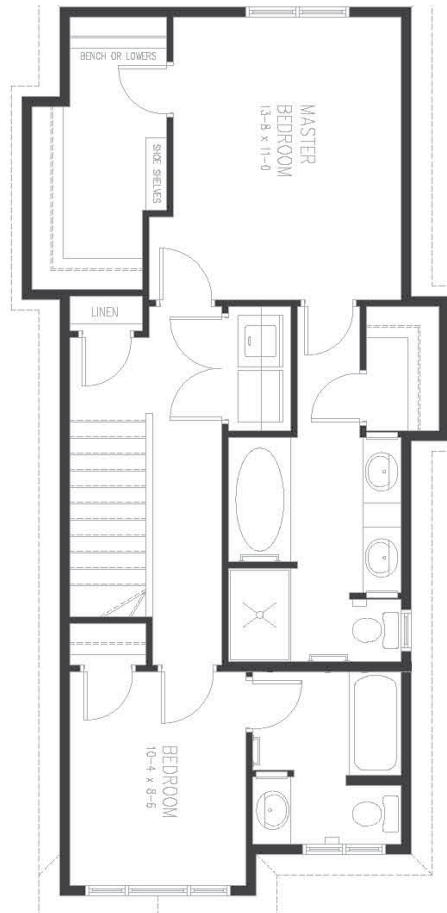
The McMahon B

1465 sq.ft
Two Storey
2 bedrooms / 2.5 baths

www.citylifelifehomes.ca



Main Level
718 sq.ft.



Upper Level
747 sq.ft.

Customize With Structural Options:

- *Extended Sitting Room*
- *Premium Kitchen Bar*
- *Larger powder room & rear entry bench*
- *Add rear entry coat rack*
- *Add hutch in dining room*
- *Larger closets*