



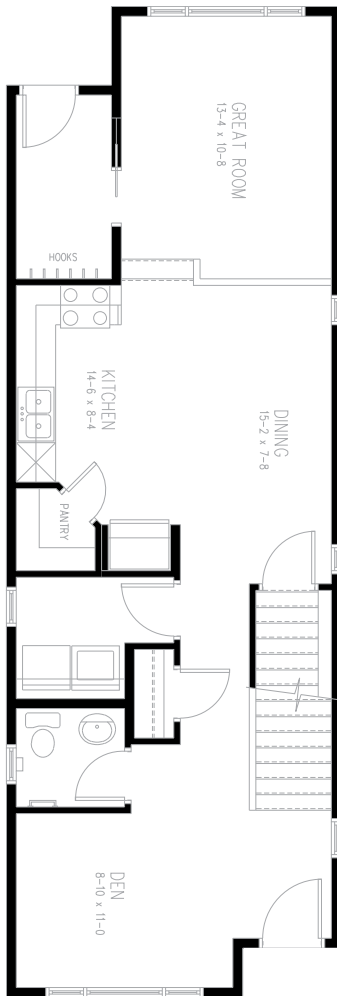
CityLife
homes
by Birchwood

The Canmore Park

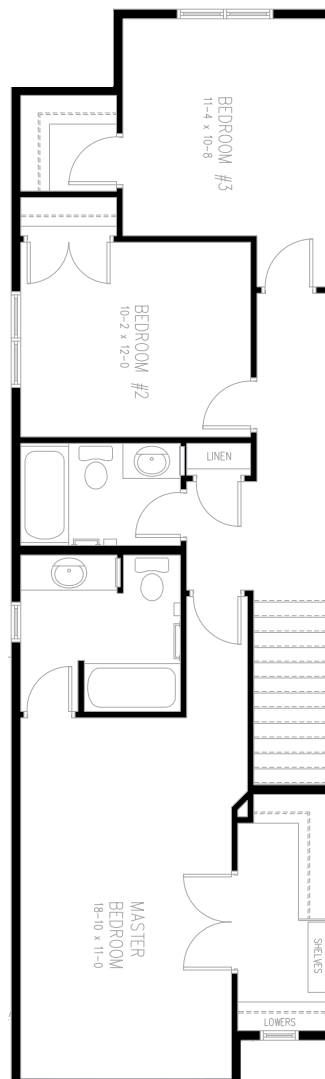
1744 sq.ft

Two Storey

3 bedrooms / 2.5 baths



Main Level
821 sq.ft.



Upper Level
923 sq.ft.

Customize With Floor Plan Options:

- Home office & upstairs laundry
- Enclosed den
- Rear entry closet & bench
- Kitchen island
- Island eating bar and nook cantilever
- Master bedroom cantilever
- Larger master closet
- Alternate closet locations for bedrooms 2 & 3
- Built-in desk in upper hall
- 5 piece ensuite & larger main bathroom